

LEAKAGE CURRENT TESTER



The GLC-9000, leakage current tester, is used to perform leakage current (or called touch current) tests on general purpose electric (IEC 60990) equipment. This tester engages with nine measurement networks (or called Measuring Device) to provide the simulation of human body whilst the EUT (equipment under test) is taking a leakage current testing, in compliance with the specific standards or regulations such as IEC, UL, JIS...etc..

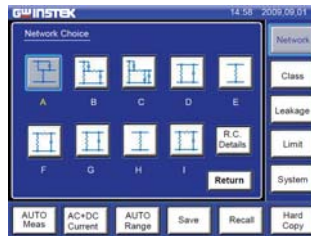
In order to provide a simple operation environment, the GLC-9000 equips large TFT LCD touch panel to configure system as well as to present the measurement settings information and result simultaneously. Besides, there are 50 preset testing conditions, which conform to IEC60990 and other standards, for general electric equipment can be recalled to reduce the setting time. In addition, 30 sets empty memory are available for user defined.

A Meter mode is also available for the GLC-9000, it uses the measurement terminal (T1/T2) to measure voltage as the same way of ordinary voltmeter. During the voltage measurement, the SELV function (safety extra low voltage) is applicable to detect the voltage value between measuring points whether exceeding the SELV setting.



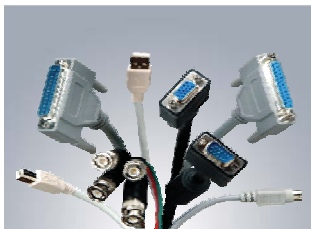
Simple and Intuitive System

The color TFT touch screen makes operation intuitive and simple, whilst making it easier to observe test result.



Various Measurement Network

Nine Measurement Network are available for measuring the leakage current of electrical and medical equipment.



Various Standard Interfaces

The various practical interfaces are equipped as standard making control convenient and flexible.

GLC-9000

FEATURES

- Suitable for General Electrical of Leakage Current Measurement
- Touch Panel with Color LCD Display
- 9 Different Measurement Network to Simulate the Resistance of Human Body
- 50 Sets Preset Test Conditions Conform to the IEC 60990 ; 30 Sets Memories for Customer Defined
- 8 Different Types of Leakage Current
- Meter Function with SELV/CONV Function
- Upper & Lower Limitation for PASS/FAIL Judgment
- Various Leakage Current Measuring Mode : DC/AC/AC+DC/AC Peak
- Various Standard Interfaces : RS-232/ GPIB/USB Host & Device/EXT I/O



Front



Rear Panel

APPLICATIONS

- Production Testing
- Research & Design
- Quality Assurance Verification

GLC-9000

GW INSTEK
Simply Reliable

SPECIFICATIONS

	Ranges	Range	Resolution	Accuracy	
DC	25.00mA	5.00mA ~ 25.00mA	10μA	±(0.2%rdg+3dgt)	
	5.000mA	0.500mA ~ 5.000mA	1μA	±(0.2%rdg+3dgt)	
	500.0μA	50.0μA ~ 500.0μA	0.1μA	±1.0%fs	
	50.00μA	4.00μA ~ 50.00μA	0.01μA	±1.0%fs	
AC or AC+DC	25.00mA	5.00mA ~ 25.00mA	10μA	±(2.0%rdg+6dgt)	10kHz<f≤100kHz ±(2.0%rdg+10dgt)
	5.000mA	0.500mA ~ 5.000mA	1μA	±(2.0%rdg+6dgt)	±(2.0%rdg+10dgt)
	500.0μA	50.0μA ~ 500.0μA	0.1μA	±(2.0%rdg+6dgt)	±(2.0%rdg+10dgt)
	50.00μA	4.00μA ~ 50.00μA	0.01μA	±2.0%fs	±2.0%fs
AC PEAK	75.0mA	10.0mA ~ 25.0mA	100μA	±(2.0%rdg+2dgt)	20Hz<f≤1kHz ±(2.0%rdg+2dgt)
	10.00mA	1.00mA ~ 10.00mA	10μA	±(2.0%rdg+2dgt)	1kHz<f≤10kHz ±(5.0%rdg+10dgt)
	1.000mA	500μA ~ 1.000mA	1μA	±2.5%fs	±(5.0%rdg+10dgt)
	500.0μA	40.0μA ~ 500.0μA	0.1μA	±4.0%fs	±5.0%fs
EUT Voltage Current	300V	85V ~ 300V	0.1V	±(2%rdg+10dgt)	
	10A	0.5A ~ 10A	0.1A	±(2%rdg+5dgt)	
METER MODE	AC/DC	10.0 ~ 300.0V	0.1V	±(3%rdg+2V)	
	AC+DC	10.0 ~ 300.0V	0.1V	±(3%rdg+2V)	
	AC Peak	15.0 ~ 430.0V	0.1V	±(3%rdg+2V)	
INTERFACE	RS-232, GPIB, USB Host & Device, EXT I/O				
POWER SOURCE	For GLC-9000 : AC 100V/120V/220V/230V±10%, 50/60Hz For EUT : AC 85V ~ 250V, 50/60Hz				
DIMENSIONS & WEIGHT	330 (W) x 150 (H) x 350 (D) mm; Approx. 5kg				

Specifications subject to change without notice.

LC-9000GD2DH

ORDERING INFORMATION

GLC-9000 Leakage Current Tester

ACCESSORIES

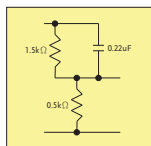
User manual x 1, Power cord x 2, Test lead(GTL-207) x 2, CD x1 (Complete user manual), Alligator clips(GLC-01) x 4 (Red x 2/Black x 2), Foil probe(GLC-02) x 1

OPTIONAL ACCESSORIES

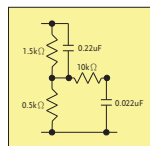
GTL-232 RS-232C Cable
GTL-240 USB Cable, USB 2.0, A-B Type (L Type), 1200mm
GTL-246 USB Cable, USB 2.0 A-B TYPE CABLE, 4P
GTL-248 GPIB Cable (2.0m)

MEASUREMENT NETWORK (MD)

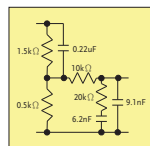
MD-A



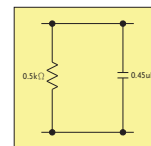
MD-B



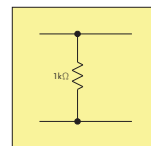
MD-C



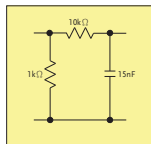
MD-D



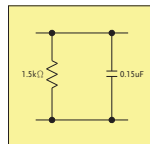
MD-E



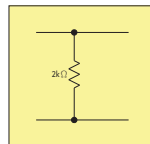
MD-F



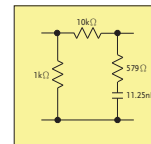
MD-G



MD-H



MD-I



Global Headquarters

GOOD WILL INSTRUMENT CO., LTD.

No.7-1, Jhongsing Road, Tucheng Dist., New Taipei City 236, Taiwan
 T +886-2-2268-0389 F +886-2-2268-0639
 E-mail: marketing@goodwill.com.tw

China Subsidiary

GOOD WILL INSTRUMENT (SUZHOU) CO., LTD.

No. 521, Zhujiang Road, Snd, Suzhou Jiangsu 215011 China
 T +86-512-6661-7177 F +86-512-6661-7277
 E-mail: marketing@instek.com.cn

Malaysia Subsidiary

GOOD WILL INSTRUMENT (SEA) SDN. BHD.

No. 1-3-18, Elit Avenue, Jalan Mayang Pasir 3,
 11950 Bayan Baru, Penang, Malaysia
 T +604-6111122 F +604-6115225
 E-mail: sales@goodwill.com.my

Europe Subsidiary

GOOD WILL INSTRUMENT EURO B.V.

De Run 5427A, 5504DG Veldhoven, THE NETHERLANDS
 T +31(0)40-2557790 F +31(0)40-2541194

U.S.A. Subsidiary

INSTEK AMERICA CORP.

5198 Brooks Street Montclair, CA 91763, U.S.A.
 T +1-909-399-3535 F +1-909-399-0819
 E-mail: sales@instekamerica.com

Japan Subsidiary

TEXIO TECHNOLOGY CORPORATION.

7F Towa Fudosan Shin Yokohama Bldg., 2-18-13 Shin
 Yokohama, Kohoku-ku, Yokohama, Kanagawa,
 222-0033 Japan
 T +81-45-620-2305 F +81-45-534-7181
 E-mail: info@texio.co.jp

Korea Subsidiary

GOOD WILL INSTRUMENT KOREA CO., LTD.

Room No.503, Gyeonginro 775 (Mullae-Dong 3Ga,
 Ace Hightech-City B/D 1Dong), Yeongduengpo-Gu,
 Seoul 150093, Korea.
 T +82-2-3439-2205 F +82-2-3439-2207
 E-mail : gwinstek@gwinstek.co.kr

GW INSTEK
 Simply Reliable



www.gwinstek.com

www.facebook.com/GWInstek